



December 2011

# THE TEMPLEBULLETIN

Volume XXXV, No. III

Louisville, Kentucky

## Happy Hanukkah



**Annual  
Brotherhood  
Hanukkah  
Dinner**

**Sunday,  
December 18,  
page 4.**

**Hanukkah Art Winner**



Dylan Breier is in the 2nd grade of Religious School. She was the overall Grand Prize Winner of the art contest. Mazel Tov!

# A Taste of Torah



December has come; the nights are getting longer, the days are getting shorter, and there is a noticeable chill in the air. All thoughts turn toward winter, but mine

somehow wander toward summer days. In part, I suppose this comes from my Northwoods roots. Winter is never really winter here in Kentucky, at least not the way the word winter is understood in the northern tundra of my youth. And, I suppose, part of the warm summer breeze that lingers in my mind at this time is a function of my own "spiritual calendar" which runs at its own pace somewhat unconnected to the actual wind or the weather outside.

Because, believe it or not, December is the time when our planning begins for creating the amazing moments which are made each summer at Goldman Union Camp Institute. Religious School assemblies and family parlor meetings at the home of Elise and Craig Goldstein have already begun. We begin assembling that remarkable collection of teachers and counselors who will inspire our youth to embrace their Jewish lives with both hands and a full heart.

This year in particular, I have been thinking of camp even more as I have been sending so many thank you notes

for your kind remembrances of my father in the form of contributions to our Hess Camp Scholarship fund, which opens the door for so many young people who would otherwise be unable to experience the most amazing summer of their lives.

I share this with you all for a reason. To share with you that I am who I am because of the spiritual life I learned through Jewish camping. Those summers spent in Zionsville have been, for my father, and for me, and for my children, a touchstone for where our Jewish roots began and in ways will always abide. And that is the greatest gift you can give for your children, your grandchildren, or for any Jewish child: the gift of GUCI – a summer of joy and friendship, of learning and of love, which can last a lifetime.

If you know a child in need of Jewish friends, Jewish learning, and a rich experience for their Jewish soul, call me and we will find a way to make the summer of their lifetime a reality.

Thinking warm thoughts of summers yet to come. L'Shalom,

*Rabbi Joe Rooks Rapport*

More Goldman Union Camp information on page 5.

## Open Office Hours for Rabbis

Our Rabbis are available to meet with you throughout the week by appointment. Just call The Temple at 423-1818 and set up a time to come by. Or if you would rather, you can just stop by during the Rabbis' Open Office Hours which are listed below.

Rabbi Joe Rooks Rapport  
Mondays 1:30 pm - 3:30 pm  
Rabbi Gaylia R. Rooks  
Thursdays 10:45 am - 12:45 pm  
Rabbi David Ariel-Joel  
Fridays 8 am to 10 am

Come by any of these times or call ahead if you want to make sure you won't have to wait.



## The Temple Board of Trustees Officers

Susan A. Lancaster . . . . . President  
Craig Goldstein . . . . . Senior Vice President  
Susan Waterman . . . . . Vice President  
Karen Berg . . . . . Vice President  
Scott Norton . . . . . Vice President  
Stuart Robenson . . . . . Treasurer  
Marlene Schaffer . . . . . Secretary  
Michael Friedman . . . . . Assistant Treasurer  
Marty Ruby . . . . . Immediate Past Pres.

### TRUSTEES

Leslie Aberson*	Jessica Loving
Ronald Abrams*	Margie Kommer
Jack E. Bergwerk	Nancy Martin
Susan Levy Bodine	Jacques Morris*
Jack Benjamin	Greg Nefouse*
Julie Y. Benson*	Laurence Nibur
Sandy Braunstein	Houston Oppenheimer*
M. Keiley Caster	Mark Oppenheimer*
James G. Davis*	John Ornstein
Phillip L. Flarsheim*	Eileen Renco
Arnold Friedman	Siddy Rosenberg
Michael Friedman	Shannon Rotschild
Richard Frockt*	Maxine Rouben
Adam Gallagher	Rebecca Ruby
Leonard Goddy*	Deborah Sandler-Perkey
Angeline Golden	David N. Shapero*
Matt Golden	Leni Sweet
Vycki Goldenberg-Minstein	Jerry Uslander*
Irvin Goldstein	Karl Victor III
Stephen Goodman	Jay L. Waldman*
Sara Gould*	Robert V. Waterman*
H. Philip Grossman*	Barth Weinberg*
Michael Heideman*	Edward Weinberg*
James Hertzman*	Paula Wolf
Mark L. Judah	
I. Marshall Kahn*	
Robert M. Klein*	* Past President
Nadyne Lee	

## Visiting the Sick

When you have a loved one, family member, or friend in the hospital or in ill health, please call Becky at The Temple at 212-2028 and give her the appropriate information.

Our rabbis make visits to area hospitals and nursing homes.

Please remember that due to confidentiality issues and the restrictions of health providers, we need your assistance in order to know where your loved one is a patient.

## President's Message



The Temple Board of Trustees governs the congregation. The Board of Trustees meets once a month to review and discuss a very full agenda. During the previous six months, we held an orientation for new Board members, invited several ancillary groups to educate us regarding their programs, approved several new members, and received recommendations for improvement for our community.

Each month the Board learns about the work of our Temple organizations. Recently, Elise Goldstein reported on our GUCI summer camp attendance and Arianna Goldstein, an enthusiastic GUCI participant, shared some of her recent camp experiences. We welcomed our newest Youth Group advisor, Sara Ruby, and received information about our Youth Group from co-advisor, Laurence Nibur. Allison Roemer and Arlene Kaufman spoke to the Board about the Early Childhood Education Center's successful enrollment for the 2011-12 year and shared ECEC's plans for the future. In October we received an update from our passionate and lively Religious School Director, Joyce Eiseman. We learned of the many programs that are offered to all ages enrolled in our Religious School.

This year, the Board has instituted a Decision Memorandum process to offer Board members the opportunity to review the agenda and any resolutions that will require a vote. These documents are sent prior to the monthly meetings. This procedure is designed to assist Board members to more effectively study proposals in advance of making a decision. In the first few months of the term for this Board, we have considered and favorably approved the recommendation for the formation of a Financial Resource Development Task Force, the establishment of a Cemetery Fund, and the approval of a restriction with regard to smoking on The Temple's campus. After the approval of each Decision Memorandum, the approved form becomes a part of the Board minutes and The Temple archives.

Members of the Board of Trustees demonstrate visible leadership in all aspects of congregational life. Board members accept the responsibility to serve the congregation and they regularly attend meetings of the Board and committees. They gain an understanding of Temple operations, attend worship services, support Temple events, and make financial and governmental decisions on behalf of the congregation. We thank all of the individuals who are serving on the current Board and who have served on previous Boards. Our congregation is a stronger entity due to the wisdom and diversity of our present and previous Board members.

Are you interested in learning more about The Temple's Board of Trustees? We invite your participation in a Bagels with the Board program to be held on Sunday morning, December 11, at 10:30 a.m. We welcome your participation. Please attend this informal discussion or e-mail your questions/concerns to [susanlancaster@gmail.com](mailto:susanlancaster@gmail.com)

*Susan Lancaster*  
Temple President

### Bagels with the Board

**Sunday, December 11, 10:30 am**

You are invited to attend this informal discussion or e-mail your questions/concerns to [susanlancaster@gmail.com](mailto:susanlancaster@gmail.com)

## Administrator's Corner



In this Bulletin, you will see an article by Cemetery Committee Chair Sonny Altman citing the creation of a new Temple Fund, The Temple Cemetery Fund. Here is a little history to explain why this fund was created and what we hope to accomplish with it.

In the past, the Temple Cemetery staff were employees of The Temple, and there were budget items allocated for Temple maintenance. Currently, the Cemetery staff are employees of Jody Bowling Irrigation, and he is an independent contractor who we pay a fixed fee to for Temple Cemetery maintenance. There is no separate line item that provides for the beautification of The Temple Cemetery.

We have a new and very engaged Cemetery Committee that would like to have funds available in order to plant trees, flowers, and shrubs and to improve the overall appearance of our Cemetery. They have had great ideas, but no funds to work with. This new Cemetery Fund would give our members who wish to see the Cemetery improved in this way a vehicle in which to donate funds that would be specifically used by the Cemetery Committee to improve its appearance.

Please consider contributing to the new Temple Cemetery Fund. We look forward to seeing improvements in the appearance of our Cemetery.

*Sally Younger*  
Temple Administrator

**THE TEMPLE**  
Congregation Adath Israel Brith Sholom  
5101 U.S. Highway 42 • Louisville, Kentucky 40241  
Phone (502) 423-1818 • FAX (502) 423-1835  
[www.templeaibs.org](http://www.templeaibs.org)

<b>Rabbis:</b> Joe Rooks Rapport Gaylia R. Rooks David Ariel-Joel Rabbinic Intern Erin Bost	<b>Administration:</b> Sally K. Younger, Executive Director Jack Benjamin, Emeritus Staff: Lark Phillips Cindy Hytken Becky King Tish Mooney Emilie Shapero Aaron Guldenschuh
<b>Rabbi Emeritus:</b> Chester B. Diamond	<b>Building Management</b> Manager: Ted Davis Matthew Gaines
<b>Music Director</b> Dr. Louis Bailey	Karen Davis Mike Asher
<b>The Temple Religious School</b> Principal: Joyce Eiseman Assistant: Nathalie Adler Emeritus, Irv Goldstein	
<b>The Temple Trager Early Childhood Education Center</b> Director: Arlene Kaufman Assistant Director: Alison Roemer Assistant: Gina Koestel	

### The Temple Mission Statement

The mission of The Temple is to:

- be a center for Reform Judaism in Louisville, Kentucky
- provide spiritual guidance and strength through the practice of Judaism
- emphasize the ideals and objectives of Reform Judaism through worship, education, congregational programming, social justice, and our community relationships
- promote the perpetuation of our Jewish heritage.

I hope everyone enjoyed their Thanksgivings. My husband and I only have our daughter here on Thanksgiving, as my son and his family go to visit the other grandparents then. Therefore, we decided to invite the young couple down the street from us as they have no family in town. It was enjoyable and almost made up for being “granddaughterless” for the holiday (and we do have her most of the year so I am really not complaining). Speaking of Thanksgiving, did those of you who purchased them enjoy the pumpkin and/or cranberry breads that WRJ made and sold for Thanksgiving? I know last month I told you we were having a bake sale on December 11, but then we realized that Sunday School was having parent/grandparent open house on November 20. That seemed like a better bake sale date as it was just in time for Thanksgiving. This was our second annual freshly baked (never frozen unless you freeze it) breads. Maybe we can make it a tradition and have our third annual sale next year.



After last month’s column was submitted and went to press, we learned of the death of Helene Zukof. Helene had been active in WRJ, even back when it was just known as Sisterhood. Even during her illness, if I called her to help (as with a bake sale), she was always willing to do so, health allowing. She also was the guiding hand behind the WRJ Cookbook, and many of her recipes are in there. We miss you, Helene.

Flyers have been sent home with Sunday School students about student shopping days in the Gift Shop for Hanukkah. Of course, anyone else can come to shop during those times. Hours are:

Sunday, December 4	9:30 am –2:00 pm
Sunday, December 11	9:30 am –2:00 pm
Sunday, December 18	3:00–5:00 pm (preceding Hanukkah Dinner)

Tuesdays through Fridays after December 4, 11 am –4 pm  
Please shop early and often, and use the coupon. We have lovely items in all price ranges for Hanukkah.  
Happy Hanukkah.

*Shalom,  
Sandy Braunstein  
WRJ Chair*

### WRJ Gift Shop Hanukkah Shopping Hours

Tuesdays-Fridays	11 am - 4 pm
**Special Religious School Shopping Day	
December 4	9:30 am – 2 pm
Sunday, December 11	9:30 am -2 pm
Sunday, December 18	3 pm – 5 pm
	(preceding the Hanukkah Dinner)

If none of these times work, please call The Temple to make arrangements, 423-1818.

Question: What does a jolly fat man in a red suit have in common with Hanukkah gift giving?

If you get the correct answer, you win some gelt.

The answer is that both are traditions borrowed from other cultures. From this point forward, you’re on your own to browse Bing or Google for the details.

The giving of gelt is a very traditional act. Children who correctly answered Hanukkah questions customarily received small coins called gelt. I imagine games of dreidel spun out of control with the winners taking coins from the losers. Although Rabbi David may not agree with me, spinning dreidels for gelt is quite similar to our poker games. For me, with or without dreidels or poker chips, the most important part is for Jewish people to gather.

Please mark your calendars for Sunday, December 18. The Temple Brotherhood, along with the ever adventurous Boy Scouts from Troop 30, will be serving a wonderful chicken dinner featuring the famous Brotherhood latkes. Although the recipe has been passed down from generation to generation (l’dor v’dor), you might get some insight by going to YouTube and searching “Brotherhood Secret Latke Recipe.” We do believe our latkes are the best.

Also featured at the Hanukkah dinner is our traditional game of Jingo. It’s sort of like bingo with a Jewish twist. The winners will receive some very special prizes.

The real winners are the recipients of Temple Brotherhood funding such as Chavurat Shalom, Adopt a Family, Temple Softball Team, Shir Chadash, TiLTY, Junior Youth Group, Trager Early Childhood Education Center, and camp scholarships to GUCI.

*Michael Friedman  
Brotherhood President*

### The Temple Hanukkah Supper Sponsored by The Temple Brotherhood BYOM (Bring Your Own Menorah) (Candles will be provided)

- Sunday, December 18, 5:00 - 7:00 pm
- Chicken Dinner with Latkes (vegetarian upon request)
  - Games, Music & Singing, Gelt, Lots of fun
  - Only (before December 15)  
Adults.....\$12 Children ages 3-13.....\$5  
Children 2 years and under are FREE!

Your check (made out to The Temple Brotherhood) is your reservation – checks should be mailed or delivered to The Temple. Prices increase after Dec. 15 to \$15 / \$8. Dinners will be graciously prepared and served by The Temple’s Boy Scout Troop 30.

## Religious School

Dear Families,

We end the first half of our school year with two very busy days in December:

Sunday, Dec. 4 - Each class has a scheduled visit to The Temple Gift Shop, the largest source of Jewish items in Louisville. The WRJ supports a variety of activities at the Religious School and your purchases, in turn, provide funding for our programs. All 2 - 5 year olds not yet in Sunday School are invited to celebrate Hanukkah at our Preschool Program at 9:45 in the BIG Room. RSVP to [jeiseman@thetempleaibs.org](mailto:jeiseman@thetempleaibs.org)

Sunday, Dec. 11 - GIANT Hanukkah Parties for Kindergarten- 6th grade; 7th and 8th grade fun field trip to 10 Pin Lanes. The bus leaves the Klein Center at 9:40 and returns at 12:15. Pizza lunch is included and this is a free event.

On Sunday, December 11, we collect new hats, gloves, underwear, and PJs for needy children in Louisville. For the past six years, our school has collected an enormous amount of clothing. If you have any gently used coats or jackets, please bring those to me, too.

Our last Wednesday is Dec. 14 and we begin the second half of the year on Wednesday, January 4. Have a wonderful and safe winter break and Hanukkah.

*Joyce Eiseman*  
*Religious School Principal*

### Bulletin Committee

Arnold Friedman, Chair	Submit to:
Cindy Hytken	
Siddy Rosenberg	Cindy Hytken, 423-1818
Karen Waldman	<a href="mailto:cindy@thetempleaibs.org">cindy@thetempleaibs.org</a>
Susan Lancaster	
Rabbi Joe Rooks Rapport	
and you . . .	

### Temple Caring Committee

Our Temple Caring Committee visits congregants residing in nursing homes and assisted living facilities or who are homebound. Please give us the names of all who would welcome a visitor. Also, please contact Susan Waterman at 426-1440 or email [susan.waterman1@gmail.com](mailto:susan.waterman1@gmail.com) if you are able to join our team of enthusiastic volunteers. We can always use additional visitors.

## Summer Camp

Goldman Union Camp Institute. . .

. . . for the time of your life!

It may be cold outside, but it's not too soon to be thinking about your child's summer plans. Jewish camping is the single most significant thing you can do to build your child's Jewish identity and Goldman Union Camp Institute (GUCI) provides a summer for Reform Jewish kids like none other.

GUCI has been a place of Judaism, fun, and friendship for children across the Midwest for 50 years. Rabbi Rapport is there for the two-week "Aleph Session" every summer and it is one of the highlights of his year - seeing so many kids literally having the time of their life.

Rabbi Mark Covitz, the camp director, visited our Hebrew School students last month and the 2012 camp brochures were sent home with all religious school students in November. If you didn't get one, they are available in The Temple office, and on GUCI's website: <http://guci.urjcamp.org/>

Scholarships for families with financial needs are available from The Temple through the Hess GUCI Camp Fund and from Jewish Community of Louisville (JCL) which will soon be kicking off a campaign in conjunction with "One Happy Camper" - <http://www.jewishcamp.org//one-happy-camper>. The deadline to apply for a Temple scholarship is February 1, 2012. You can call Lark Phillips at 212-2035 to request a form or download one from The Temple website. Contact Andrea Melendez (238-2725) at JCL now for information on scholarship applications and deadlines. Spaces at camp fill up quickly, so don't delay in sending your camp application to GUCI to hold your child's spot before applying for a Temple scholarship. Act now so you can give your child a precious gift that will last far beyond the summer months.



*Welcome New Temple Members*

Daniel & Susan Hunziker  
Dr. Gail Becker

**St. John's Men's Center** - **Bakers** and youths needed to provide 35 dozen plain sugar cookies for a Holiday Party. Great family or group experience. We just need the cookies, tubs of icing and sprinkles by December 4.

**St. Vincent DePaul Open Hand Kitchen**  
1026 S. Jackson Street  
Need 10 volunteers to **serve** lunch Dec 23 & 25 11:30 -1:30 pm. St. Must be 16'ish. A great experience.

**Ronald McDonald House**  
550 S. First Street  
**Provide and serve** brunch for about 35 residents on Sunday Dec 25 from 9 am-11am (families welcome). Contact Marci Rosengarten Moss0806@aol.com



**Cathedral of the Assumption Soup Kitchen** 443 S. Fifth

- Collecting **toiletries**, toothpaste, hand sanitizer for gift bags for "outside men" Need ASAP
- Serve Lunch**
- December 20, 22,23,25 and 27**
- Time 10:45 to 1:15 pm
- December 25, 8 volunteers needed.

**Brooklawn Children's Home**  
Be an Elf!  
2125 Goldsmith Lane.  
**Wrap gifts** for residents on Friday, Dec. 16, 10 am - 12 noon or 2 pm - 4 PM. 6 to 10 volunteers per shift.  
Just bring scissors - need more help.

**Center for Women and Families**  
927 S. Second Street

- Collecting** diapers of all sizes, pull-ups and wipes and cosmetics
- Provide and serve** soup and salad on Dec. 25 for 60 residents.
- Lunch 11:15 to 1:15
- Dinner 4:15 to 6:15 pm.

**Schuhman Center**  
2nd & Liberty  
**Assemble** food baskets at Christ Church, Cathedral

- Dec 12, 13 & 14
- 9:30 am - 2:00 pm
- 5-7 volunteers per day.
- Collecting** fall and winter clothes for women and children now.

**Winter Clothing/Furniture Drive**  
All the agencies are looking for **warm** things now: coats, socks, new underwear, toboggans, sweaters and heavy gloves for outdoor men and children's gloves.

- Coalition for the Homeless
- Catholic Charities
- St. John's Center (needs furniture and household items now)



**Gilda's Club**

- Volunteer for this free community Cancer Support group in the Highlands. RSVP to Jenn Morris at 371-3051.
- Temple WRJ is sponsoring a December dinner, Tuesday, December 6 for 40 to 50 people, contact Sandy Braunstein, 459-6043.



**St. Vincent DePaul at Temple**  
**Make 500 Sandwiches** for St. Vincent DePaul at Temple.

- Meet at Temple kitchen, Sunday January 1 at 1 pm.
- Call Rabbi David 212-2028 to RSVP and for food assignment.
- These men only get lunch on Jan. 1 so our sandwiches will be a blessing at dinnertime.

**Hospice Musicians**  
Dec 25 11-3 Your beautiful **music** is a wonderful gift. Pick your time to play at 6th floor of downtown Norton Hosparus Pavilion.

**Maryhurst - Brunch** at Maryhurst on Dorsey Lane Dec 25. A Temple Shalom coordinated event, contact Kathy Fields.

**Volunteers of America Family Emergency Shelter**  
1321 S. Preston  
Two options:

- Play with children** and **volunteer** in the NEW play room anytime on December 25.
- OR **serve** (and perhaps sponsor) dinner Sunday December 25, at 5 pm (GREAT family or group event).



**Home of the Innocents**  
1100 E. Market Street  
Dec. 25 @10 am **Read to and bake** cookies with residents.



**West End School - Mitzvah Meals**  
Mitzvah Meals...A Continuing Project  
The West End School has hungry boys! We are asking you to supply entrees and/or casseroles that can be frozen and will feed 20 boys. Please store the meals in freezable, disposable containers that are no larger than 9x12. Mark them "West End School" and drop them off at The Temple office. Please also list your name, the contents, the approximate number of servings, and any cooking instructions.  
Kroger Cards and checks are most appreciated too.



Call Amy Benovitz for questions or to volunteer.  
425-0373

New Cemetery Donation Fund

The Board of Trustees, acting on a recommendation from the Cemetery Committee, has approved the creation of a new tribute fund, The Cemetery Fund.

Beginning immediately you can designate contributions in honor of someone or in memory of someone to go to the new fund. This will enable the Cemetery Committee to continue to upgrade and improve the appearance of the cemetery.

This is the first time that such a fund has been created and we encourage everyone to consider designating it for your gifts for honorariums or memorials.

If you have any questions concerning the new fund, contact Sally Younger at The Temple.

Sonny Altman  
Committee Chair

Lincoln Monument Rededication



Rabbi Joe Rapport on the steps of the Abraham Lincoln Birthplace National Historic Monument in Hodgenville, Kentucky.

Rabbi Rapport and Temple Archivist, John Ornstein, traveled to Hodgenville on Nov. 14 where Rabbi Rapport was part of the centennial celebration and rededication of the Lincoln monument on its 100th anniversary. Rabbi Hyman Enelow, of The Temple, was part of the original dedication in 1911.

Bridges: Welcome to Judaism

December 12, January 23, February 13, March 19  
6:00 - 7:00 pm (Room 172)

A discussion group for those considering conversion and those who are newly Jewish. Spouses and partners are encouraged to attend. Sponsored by The Temple facilitated by Nadyne Lee under the rabbinic guidance of Rabbi Gaylia R. Rooks

December Dilemma

Interfaith Parents:

The December holidays are stressful. Couples often struggle over how to observe the holidays. Even when the children are being raised as either clearly Jewish or Christian, questions arise about celebrating the "other" holiday. Our rabbis will offer guidelines for making the holidays family celebrations, not battlegrounds.

People Considering Conversion:

A difficulty with becoming Jewish may be separating from precious childhood traditions. Christmas is often one that is especially difficult to leave behind. Less because of theology than nostalgia, family customs of holiday gatherings, music, decorating trees, and giving gifts that remind us of warm childhood memories. Our rabbis, and other people who have walked your path will offer helpful insight on navigating through this season.

Jewish Parents:

This is the time of year when it's tough to be a Jew. Every public place inundates us with carols. Malls are decorated with ornate trees, neighborhoods glow with twinkling lights, and well meaning strangers wish us, "Merry Christmas." Santa brings gifts to good little girls and boys...Christian girls and boys, that is. Hanukkah can't hold a candle to Christmas. So what's a Jewish parent to do?

Come to our Rabbi's Discussion of the December Dilemma on Tuesday, December 6 from 7:00-8:30 in The Temple Library.



Help Feed the Hungry  
Donate food to the JFCS  
Food Pantry

All foods must be donated in original package. Please do not donate expired items.

Questions, call Shelley Kahn at 452-6341



# Hanukkah Art Winners



Ari Hatzell  
Kindergarten



Sophie Braunstein  
1st Grade



Lindsey Latts  
3rd grade



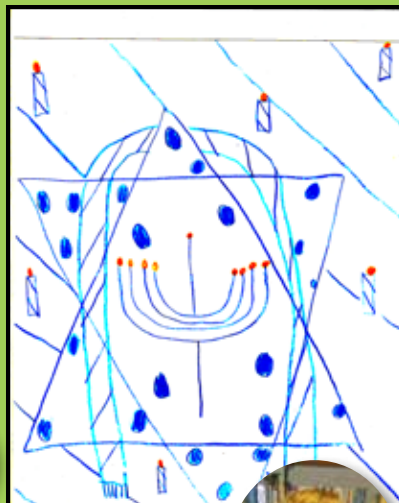
Isaac Blue  
4th grade



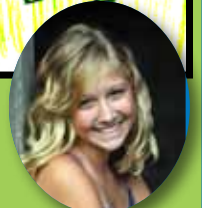
Eric Laber  
5th grade



Melissa Scianimanico  
6th grade



David Hemmer  
7th grade



Jessie Hymes  
8th grade

## Mazel Tov

## Life Cycle

## Photo Gallery



### Invitation to a Special Oneg

Jerry and Sandy Uslander invite the congregation to join them as they celebrate a special event on Friday, December 16 with a special oneg in honor of their 50th wedding anniversary.

.....

Louis Olswang, son of Amy and Dan Olswang and the brother of Chloe, was called to the Torah as a Bar Mitzvah on Saturday, November 5, at North Shore Congregation Israel, Glencoe, Illinois.

Louis is the great-great grandson of the late Juliet and Arnold Levy, the late Sadie and Abe Brill, and the late Betty and Mose Weinberg; the great grandson of Evelyn and Manuel Weinberg and Grace and Henry Levy, and the grandson of the late Jane Weinberg and Marty Weinberg.

He is a 7th grader at Edgewood Junior High School in Highland Park, Illinois, and runs cross-country. He loves spending time with his friends and on his Ipad, skating and snowboarding, listening to music, and playing the guitar.

.....

Nathan Salzburg was recently featured on the cover of LEO with a feature article. Nathan is the son of Susan Salzburg. He is a former GUCI Camp and TiLTY Songleader.



Nadyne Lee will celebrate her Bat Mitzvah on December 10. Since fulfilling her life dream to become a Jew, she has participated in many activities at The Temple.

Nadyne is a member of the Board of Directors, chairperson of the Outreach Committee, and member of the Social Justice Action Committee. Under the supervision of Rabbi Rooks, Nadyne facilitates Bridges: Welcome to Judaism. She organized the community-wide Taste of Judaism program. Nadyne has been on the Board of Women of Reform Judaism, chaired the WRJ Art Calendar Project, and co-chaired three Temple Women's Shabbaton, among many other activities. She is currently studying to become a Rabbinic Pastor.

Nadyne and her husband Joe live in Leitchfield, Kentucky. She is a pediatric nurse practitioner and Joe is a pediatrician. They worked together at the Leitchfield Pediatric Clinic for 35 years until her retirement four years ago. They raised three children, David, Merry Beth, and Mark, and have four grandsons.

She invites the congregation to join her for a creative Shabbat Service on this joyful occasion.

## Young Adult Group Outing



Paul Eiseman, Tracy Rabin, Shannon Rothschild



Lawrence Nibur, Reed Weinberg, Craig Goldstein



Elise Goldstein, Orit Goldstein, Jaime Bronfman, Kim Schwartz



Scott Norton, Jon Goldstein, Scott Schwartz, Oleg Barski



Diane Weinberg, Kim Norton, Susan Rudy

The young adult group meets semi-regularly for social outings. These have been in homes or most recently they met at Chuy's near Oxmoor.

If you would like more information on the group or would like to be included, contact Craig Goldstein. He can be reached at [craiglouisville@bellsouth.net](mailto:craiglouisville@bellsouth.net).

# December

SUNDAY	MONDAY	TUESDAY	WEDNESDAY	THURSDAY	FRIDAY	SHABBAT
<b>November 27</b> No Religious School	<b>November 28</b> Minyan 7:30 am Bridges to Judaism 6:00 pm Adult Education 7:00 pm 8:00 pm	<b>November 29</b>	<b>November 30</b> Temple Scholars 9:30 am - 12:00 noon B'nei Mitzvah Class 3:15 pm Hebrew School 4:30 pm	<b>December 1</b> Chavurat Shalom at Temple Shalom 12 noon Farmers Market 1-6:00 pm BSA Troop 30 7:00 pm MRJ Poker 7:00 pm	<b>December 2</b> Yahrzeit Service 7:00 pm Alef Service 7:30 Shabbat Service 7:30 pm Oneg Shabbat 8:30 pm	<b>December 3</b> Shabbat Vayeitzei Torah Study 9:00 am Shabbat Services 10:30 am Shir Chadash Rehearsal 12:00 noon
<b>4</b> Religious School 9:30 am - 12 Noon B'nei Mitzvah Class 12 noon Israel Trip Information Session 5 pm	<b>5</b> Minyan 7:30 am Adult Education 7:00 pm 8:00 pm	<b>6</b> December Dilemma 7:00 pm	<b>7</b> Temple Scholars 9:30 am - 12 noon B'nei Mitzvah Class 3:15 pm Hebrew School 4:30 pm WRJ Board meeting 6 pm	<b>8</b> Chavurat Shalom 12 noon Farmers Market 1-6:00 pm BSA Troop 30 7:00 pm	<b>9</b> Yahrzeit Service 7:00 pm Alef Style Shabbat Service 7:30 pm Oneg Shabbat 8:30 pm	<b>10</b> Shabbat Vayeira Torah Study 9:00 am Shabbat Services Bat Mitzvah Nadyne Lee 10:30 am
<b>11</b> Religious School Hanukkah Celebrations 9:30 am - 12 Noon Bagels with the Board 10:30 am B'nei Mitzvah Class 12 noon	<b>12</b> Minyan 7:30 am Bridges to Judaism 6:00 pm Adult Education 7:00 pm 8:00 pm	<b>13</b> Executive Committee 5:45 pm	<b>14</b> Temple Scholars 9:30 am - 12:00 noon B'nei Mitzvah Class 3:15 pm Hebrew School 4:30 pm	<b>15</b> Chavurat Shalom 12 noon Farmers Market 1-6:00 pm BSA Troop 30 7:00 pm Brotherhood Game Night 7:00 pm	<b>16</b> Yahrzeit Service 7:00 pm Shabbat Service 7:30 pm Oneg Shabbat 8:30 pm	<b>17</b> Shabbat Chayei Sara Torah Study 9:00 am Shabbat Services 10:30 am Shir Chadash Rehearsal 12:00 noon
<b>18</b> No Religious School Brotherhood Hanukkah Dinner 5:00 pm	<b>19</b> Minyan 7:30 am Volunteer Reception 2:00 - 4:00 pm	<b>20</b> Needlepoint Group 6:30 pm	<b>21</b> No Temple Scholars No B'nei Mitzvah Class No Hebrew School	<b>22</b> No Chavurat Shalom Farmers Market 1-6:00 pm	<b>23</b> Yahrzeit Service 7:00 pm Shabbat Service 7:30 pm Oneg Shabbat 8:30 pm	<b>24</b> Shabbat Miketz Torah Study 9:00 am Shabbat Services 10:30 am
Hanukkah First Night						
<b>25</b> No Religious School Chinese Dinner & Movie 6:00 pm Dinner 7:00 pm Movie	<b>26</b> Minyan 9:00 am Temple office closed	<b>27</b>	<b>28</b> No Temple Scholars No B'nei Mitzvah Class No Hebrew School	<b>29</b> No Chavurat Shalom Farmers Market 1-6:00 pm	<b>30</b> Yahrzeit Service 7:00 pm Shabbat Service 7:30 pm Oneg Shabbat 8:30 pm	<b>31</b> Shabbat Toldot Torah Study 9:00 am Shabbat Services 10:30 am



**Alef: A Service of Holiness and Renewal**  
 December 2 at 7:30 pm  
 (Klein Center Levy Great Hall)



All ages are welcome to join Rabbi Gaylia Rooks for a contemporary service with guitar and ukrainian mandolin on the first Shabbat of every month. Join us to welcome Shabbat as we fill the Klein Center with the warmth of holiness of God's Presence through praise and song.

**Mark Your Calendar  
 Special Shabbat Services**



**Martin Luther King Jr. Shabbat Service**

Friday, January 13 - 7:30 pm  
 with our special guest speaker Merv Aubespain  
 co-author of "Two Centuries of Black Louisville."

**Interfaith Shabbat Service**

Friday, February 17 - 7:30 pm  
 Dr. Johanna Bos, Professor of Bible and the Old Testament from the Louisville Presbyterian Theological Seminary will be preaching at the Interfaith Shabbat.

**Mark Your Calendar**

- January 6 Founders' Day Classical Shabbat Service
- January 13 Martin Luther King Jr Shabbat Service
- Matzah Ball Family Shabbat
- January 22 Movie - Arab Labor
- January 27 Outreach Shabbat
- February 3 Alef: A Service of Holiness and Renewal
- Scout Shabbat with The Temple's Troop 30
- February 2 Family Shabbat Dinner and Service
- February 7 Annual WRJ Interfaith Coffee
- February 10 Jewish Community of Louisville Shabbat
- February 17 Interfaith Shabbat
- Rev. Dr. Johanna Bos, LPTS
- February 24 Social Action Shabbat
- March 2 WRJ Shabbat at the Alef Service
- I.M. Wise Classical Shabbat Service
- March 10 Purim Family Shabbat Dinner and Service
- March 18 Movie - Lebanon

**Chavurat Shalom** Thursdays at The Temple  
 Lunch at 12 noon Program at 1 pm  
 RSVP: 423-1818 Lunch only \$ 5

- December 1 Meeting at Temple Shalom with Rabbi Miles
- December 8 Ken Schultz from Humana, "Medicare"
- December 15 Our annual Hanukkah lunch with latkes
- December 22 and 29 no meeting, Happy Holidays

**Volunteer Appreciation Reception**

The Temple, Rabbis, and staff invite all volunteers to enjoy this annual appreciation reception hosted by The Temple. We invite all to attend.

**Monday, December 19, 2 pm - 4 pm**

Please call Sally or one of the Rabbis for any further information. We hope to see you all there.

**Kroger Fundraising**



The season for giving is here. Use your Kroger gift card for everything you purchase at Kroger: pharmaceuticals, health and beauty, flowers, gasoline, stamps and more. Yo will be giving to The Temple as well.

If you have a Kroger Gift Card that has not been used for 90 days or more, and does not have a cash balance, it is void and must be replaced only at The Temple.

This is a painless way for anyone to make contributions to The Temple.

Thank you for your participation in this program, which earned \$ 355 last month.

*Corine and Jack Bergwerk  
 Committee Chairs*



*Pillars of The Temple*

**"PLANTING FOR THE FUTURE"  
ED WINKLER**

There are two quotations of which I am especially fond. The first is by Albert Einstein who said, "A hundred times every day I remind myself that my inner and outer life depends upon the labors of other men [and women], living and dead, and that I must exert myself in order to give in the measure as I have received and am still receiving." The second is a verse from a poem by Joyce Johnson Rouse. It says,



Ed Winkler was a man with a heart and his heart was big enough for all of us. He had a way of including everybody. With Ed no one was left out - no member of his family, or his congregation, his community or his people wherever they were. If you talk about service, he served; if you talk about giving, he

*I am standing on the shoulders  
of the ones who came before me.  
I am stronger for their courage,  
I am wiser for their words.  
I am lifted by their longing for a fair  
and brighter future.  
I am grateful for their vision,  
for their toiling on the Earth.*

These are thoughts which prompted me to recognize just some, among many at The Temple, upon whose shoulders we stand and in whose memory we should give in the measure as we have received and are still receiving! They were pillars of The Temple and we should not only remember them, but emulate them as well, for they and others like them are the reason we are here today. Their vision has become our reality, our Temple, and we must see ourselves as the future just beginning!

C.B.D.

gave. If the cause was worth talking about, then it was worthy of his own time and energy.

Following the end of WWII in 1945, Ed was among those who undertook the project of rebuilding the only synagogue under the American Flag in Manila, which had been destroyed by the Japanese. They had used it as an ammunition dump and then blew it up prior to the return of the American forces. In recognition of his generosity in helping to turn those ruins into an enduring memorial to servicemen and women of all faiths, who gave their lives in the Philippines, he was made a Lifetime Honorary Member of The Manila Synagogue.

Ed Winkler was a man of conviction, who lived the principles he expected to see in others. He acted not out of ego, but because of his humanity, because to him it was the right thing to do and his efforts were extraordinary. No one chaired the United Jewish Campaign more than he and no one did more for his synagogue than he. For many, a Temple, while highly regarded, is still peripheral to their daily lives. For Ed, however, his congregation was his love and part of the fabric of his life. He thrived on its activities, was nurtured by the worship, was a mainstay of its educational opportunities, and served in every capacity, including becoming its president. He was a classic example of the man, who in his latter years planted a tree and when asked why, since he would probably not live long enough to eat of its fruit, replied, "I did not find the world desolate when I entered it, as my parents planted for me, so must I plant for my children and grandchildren." That was Ed Winkler, always determined to provide for the future!

*Rabbi Chester B. Diamond*

**December Weekly Torah Portion's**

Vayeitzei (Genesis 28:10-32)

- Jacob dreams of angels going up and down a ladder. God blesses him. Jacob names the place Bethel.
- Jacob works seven years in order to marry Rachel, but Laban tricks Jacob into marrying Leah.

Vayishlach (Genesis 32:4-36:43)

- Jacob wrestles with a "man," who changes Jacob's name to Israel.
- Jacob and Esau meet and part peacefully, each going his separate way.

Vayeishev (Genesis 37:1-40:23)

- Jacob favors his son Joseph with a coat of many colors, which the other brothers resent.
- The brother sell Joseph into slavery. After he is shown Joseph's coat of many colors, which had been dipped in the blood of a kid, Jacob is led to believe that Joseph has been killed by a beast.
- God is with Joseph in Egypt until the wife of his master, Potiphar, turns against him, whereupon Joseph is imprisoned.

Mikeitz (Genesis 41:1-44:17)

- Joseph interprets Pharaoh's two dreams and predicts seven years of prosperity followed by seven years of famine.
- Pharaoh places Joseph in charge of food collection and distribution.

Vayigash (Genesis 44:18-47:27)

- Judah pleads with Joseph to free Benjamin and offers himself as a replacement.
- Joseph reveals himself to his brothers and forgives them for selling him into slavery.

*In Memoriam:*

*The Congregation extends its sincere condolences to the families of:*



Hilda Meyers  
Nancy Hopewell Mannel  
Anita Goldberg  
Ruth Weisman  
Julius Fabricant

# Generous Donations to The Temple Funds

## Brotherhood Transportation Fund

### IN MEMORY OF:

Henry Frank  
Norton and Marcia Frank

## Chavurat Shalom

### IN MEMORY OF:

Harry Gradman  
Sonia and Ron Levine  
Adolph Horwitz  
Julia Martin  
Sarabell Fineman Solomon  
Joseph and Lois Fineman  
Isidore Zahler  
Irene Zahler  
IN HONOR OF:  
Elise Ballew's birthday  
Dr. Laurie Ballew

## Diamond Religious School Education Fund

### IN HONOR OF:

Elise Essig's Special Birthday  
Ivan and Lois Marks  
IN MEMORY OF:  
William Hummel  
Jay, Karen and Scott Waldman  
Sholem Charnaya  
Roza Charnaya  
Mose Neustadt  
David and Carolyn Neustadt

## Endowment Fund

### Generous Donation from:

Arnold and Ellen Shaikun  
IN HONOR OF:  
Speedy Recovery David Joels  
Linda and Stephen Goodman  
Amy Benovitz  
Dr. Richard Wolf  
Carolyn Neustadt  
Frances Rothschild and Mickey Nathanson  
Ruthie Dworin's Bat Mitzvah  
Irene and Alfred Rosenfield  
Lauren and Leah Kasdan's B'Not Mitzvah  
Anne Shapira  
Frances Rothschild and Mickey Nathanson's marriage  
Shelton and Anita Weber  
IN MEMORY OF:  
Henry Frank  
Elaine Frank  
Adora Rosenstein  
Linda and Stephen Goodman  
Helene Zukof  
Irvin and Daisy Goldstein  
Ruth Zucker  
Carole and Shelley Rifkin  
Maxine and David Rouben  
Sandee and Lester Miller  
Alexander Glassman  
Maxine and David Rouben  
Hilda Meyers  
Karen and Jay Waldman  
Sandee and Lester Miller  
Simon Goodman  
Linda and Stephen Goodman

## Fishman Library Fund

### IN HONOR OF:

Siddy Rosenberg's new grandson  
Marlene Ornstein  
Speedy Recovery Dr. Arnold Belker  
Speedy Recovery Martin Margulis  
Robert and Emily Keisler  
IN MEMORY OF:  
Max Hyman  
Dale and David Hyman  
Ilse Ehrlich  
Leo and Josie Loeb  
Helene Zukof  
Dorothy Wasserman  
Marlene Ornstein

## General Budget

### Generous Donation From:

Michael and Barbara Furey  
IN HONOR OF:  
Brandon Coan and Summer Auerbach's engagement  
Maxine and Murrel Goldberg  
Elise Essig's birthday  
Bettie Watson  
IN MEMORY OF:  
Ilse Ehrlich  
The Blake School  
Martin and Patricia Schiller  
Edwin Cohen  
Lela Saag  
Edward Saag  
Terry and Gary Herman  
Rona Dictor  
Barry and Shelley Meyers  
Leonard Abraham  
Marvin M. Sotsky and Family  
Blanche Taustine  
Shirley Jacobs

## Albert and Betty Hess G.U.C.I. Camp Fund

### IN HONOR OF:

Siddy Rosenberg's new grandson, Eitan  
Harold and Gail Herman  
Karen and Jay Waldman  
Elise Essig's Special Birthday  
Sharon Kaplin  
IN MEMORY OF:  
James Rapport  
Zehava Naamani  
Marian and Kevin Jenkins  
Allan and Cathy Tasman  
University of Louisville  
Mindy and Jacob Blum  
Alan and Carol Leibson  
Lisa Shapiro and Alan Golding  
Joel and Paula Ungerteider  
Bettye Abramson  
RoseLynne Goldstein  
Allan and Cathy Tasman  
Ilse Ehrlich  
Max Rosenberg  
Helene Zukof  
Sidonie Roth  
Hilda Meyers  
Dolly Sturman  
Siddy Rosenberg  
Dorothy Wasserman  
Harold and Gail Herman

### William Schutz

Gerald and Benita Berman  
Michael Rosenberg  
Sam and Bettye Rosenberg  
Arnold Switow  
Eunice Switow  
Dolly Sturman  
Helene Zukof  
Ann Hess and Joel Sokoloff  
Ruth Zucker  
Nancy and Stuart Robenson  
Sonia Hess

## Fund for the Homeless

### IN HONOR OF:

Elise Essig's Special Birthday  
Judith Marks  
IN MEMORY OF:  
Leonard Abraham  
Judith Marks  
Carol Behr  
Nancy Haydon  
Lynn Haydon  
Louis Levy  
Joseph and Lois Fineman  
Irwin Cohen  
Carolyn Kreitman  
Dolly Sturman  
Sonia Hess

## Samuel H. Klein and Hattie Brohm Klein Memorial Fund

### IN HONOR OF:

Speedy Recovery Elaine Klein  
Allan and Marjorie Baker

## Louis, Evelyn & Markham Levy Audio and Visual Arts Fund

### IN HONOR OF:

David and Barbara Gordon's new home  
Les Aberson's special birthday  
Joe and Angeline Golden's new grandson  
Lee and Carolyn Grossman's special anniversary  
Speedy Recovery Dr. Arnold Belker  
Matt Golden's upcoming marriage  
Louis and Wilma Levy  
IN MEMORY OF:  
Helene Zukof  
Arnold Switow  
Dorothy Wasserman  
Esther Zegart  
Louis and Wilma Levy

## Martin and Ginger Lewis Lecture Fund

### IN MEMORY OF:

Leonard Abraham  
Sheila and Larry Lynch  
Ruth Zucker  
Mrs. S. Arnold Lynch

## Mazon Fund

### IN HONOR OF:

Elise Ballew  
Dr. Laurie Ballew  
Mercedes Nibur  
Linda Bledsoe

# Generous Donations to The Temple Funds

Lisa and Matt Goldberg's 5th anniversary  
Mark and Laura Rothstein  
Siddy Rosenberg's new grandson  
Arnie and Bette Friedman  
Evelyn and Bill Sabes' Grandson's marriage  
Arnie and Bette Friedman  
IN MEMORY OF:  
James Rapport  
Dale and David Hyman  
Dorothy Wasserman  
Julia Martin  
Siddy Rosenberg  
WRJ  
Helene Zukof  
Sonia Hess  
Maxine and David Rouben  
Ruth Zucker  
Dorothy Wasserman  
Carole and Shelly Rifkin  
Sarah Weintraub  
Elsie Ballew

## Meyer Youth Cultural Programming Fund

IN HONOR OF:  
Speedy Recovery Dr. Melvin Koby  
Jane and Steve Shapiro

## Prayer Book Fund

IN HONOR OF:  
Speedy Recovery Peggy Greenwald  
Marjorie and Allan Baker  
IN MEMORY OF:  
Leonard Abraham  
Marjorie and Allan Baker  
David Schechter  
Bonnie and Allen Bloom

## Rabbis' Discretionary Funds

IN HONOR OF:  
In Appreciation of a Meaningful Holiday Season  
Barb Fabricant  
Elise Essig's Birthday  
Madeline Bernstein  
Gladys and Louis Bass' Special Anniversary  
Betty Younger  
Polly Waldman's daughter's marriage  
Marjorie and Allan Baker  
IN MEMORY OF:  
James Rapport  
Ellen Shaikun  
Marcia Abramson  
Lewis and Gladys Bass  
Betty Jane Bronner  
Dr. Kenneth and Shelley Zegart  
Sue and Tom Sobel  
Julia Martin  
Shirley Jacobs  
Sharon Nussbaum & Manny Wexler  
Bettye Abramson  
Sue and Tom Sobel  
Anna Bass  
Lewis and Gladys Bass  
Joseph Lang  
Hillard Aberson  
Les Aberson  
Robert Watson  
Bettie Watson

Henry Frank  
Julie and Jim Ensign  
Beatrice Jacobs  
Susie Jacobs  
Max Jacobs  
Frederick Jacobs  
Leonard Abraham  
Maxine and David Rouben  
Helene Zukof  
June and Irv Pittleman  
Sue and Tom Sobel  
William Wenneker  
Elsie Lowenstein  
Les Aberson  
Yetta Suzan  
Larry and Barbara Suzan  
Blanche Wasserman  
Marjorie and Allan Baker

## Don and Ann Roth Fund for the Archives

IN HONOR OF:  
Speedy Recovery John Ornstein  
Annette Liebman  
IN MEMORY OF:  
Samuel Berg  
Shirley Spero  
Edwin Cohen  
Betty Younger  
Yetta Suzan  
Annette Liebman

## Louis Shankman Kutz Camp Scholarship Fund

IN HONOR OF:  
Speedy Recovery David Joels  
Maxine and Murrel Goldberg  
IN MEMORY OF:  
Louis C. Shankman  
Carole Shankman Goldberg  
Rachel Shankman Joels  
Jeffrey A. Shankman  
Hilda Meyers  
Lawrence and Carole Goldberg

## Happy and Irv Shaw Holocaust Memorial Fund

IN HONOR OF:  
Speedy Recovery Happy Shaw  
Carolyn and Lee Grossman

## Temple Trager Early Childhood Education Fund

IN HONOR OF:  
Speedy Recovery Bernard Trager  
Stanley and Ellen Bayersdorfer  
IN MEMORY OF:  
Harry Gradman  
Bill and Valari Bornstein  
Selma Rosenberg  
Judy Rosenberg and Gary Biggs

## Waller Chapel Fund

IN MEMORY OF:  
Helene Zukof  
Harold and Gail Herman

## Manuel and Evelyn Weinberg Youth Education Fund

IN MEMORY OF:  
Harris Lefkowitz  
Norton and Marcia Frank

Ruth Zucker  
Marlene and Ben Schaffer

## Altar Flowers Fund

IN HONOR OF:  
Elise Essig  
Bernice Brill  
IN MEMORY OF:  
Harry Gradman  
Ann Leah Blieden  
James Rapport  
Louis Atlas  
Belle and Philip Levy  
Hammel Family  
Suzanne Hammel  
Ilse Ehrlich  
Linda Bledsoe  
Elise Essig  
Mutzie Perreles

## Choir Fund

IN HONOR OF:  
IN MEMORY OF:  
Helene Zukof  
WRJ  
Mindy and Michael Needleman  
Ruth Zucker  
Irene Zahler  
Mindy and Michael Needleman

## WRJ

IN MEMORY OF:  
Helene Zukof  
Maxine and David Rouben

## Donations to Oneg Shabbat Fund

IN MEMORY OF:  
Dorothy Wasserman  
Stuart and Nancy Robenson  
Morris Perlmutter  
Irene Zahler

## Tikkun Olam Relief Account

IN MEMORY OF:  
Helene Zukof  
Ruth Zucker  
Arnie and Bette Friedman  
James Rapport  
Linda Guldenschuh  
Linda Bledsoe  
Mary Rudd  
Betsy Rudd Bennett

## Northern Michigan University James Rapport Scholarship Fund

IN MEMORY OF:  
James Rapport  
Jill and Gary Fuchs  
Clifford and Sharon Radin  
Gerald and Benita Berman

These generous donations were made by  
October 31, 2011



The Temple Bulletin  
5101 US Highway 42  
Louisville, KY 40241

NON PROFIT ORG.  
U.S. POSTAGE  
PAID  
LOUISVILLE, KY  
PERMIT NO.126

Friend of Synagogue 3000  
NA-826 08-2003

Visit us on the web at: [templeaibs.org](http://templeaibs.org)

THE TEMPLE, Congregation Adath Israel Brith Sholom, Established January 1843, Founding Member, Union for Reform Judaism


## Chinese Dinner and Movie

# Noodle

Sunday, December 25, 2011  
Dinner at 6:00 movie at 7:00pm  
In the Waller Chapel

Dinner cost \$5.00  
Please RSVP to 423-1818

At thirty-seven, Miri is a twice-widowed, El Al flight attendant. Her well-regulated existence is suddenly turned upside down by an abandoned Chinese boy whose migrant-worker mother has been summarily deported from Israel. The film is a touching comic-drama in which two human beings -- as different from each other as Tel Aviv is from Beijing -- accompany each other on a remarkable journey, one that takes them both back to a meaningful life.



**15%**  
off

WRJ Gift Shop

Excludes CD's, books, cards,  
and items \$10 or under.  
Expires 12-31-11

# Israel . . .

## again or for the First Time?



NOW is your opportunity.

- The Temple is planning a tour of Israel June 10-22, 2012 to be led by Rabbi David.
- Join us for an information session about this trip.
- Sunday, December 4, 2011, 5:00 pm in the Klein Center
- Please RSVP to Becky King at 212-2028 or [rking@thetempleaibs.org](mailto:rking@thetempleaibs.org).